



# Information Packet for New Homeowner Customers of the MCMUA Transfer Stations

Effective January 1, 2012

## Administrative Office Information

Telephone: 973-829-8585

Fax: 973-285-8397

Office Hours: 8:00 a.m. - 4:30 p.m., Monday-Friday

### Office Location:

Morris County Municipal  
Utilities Authority  
The Cultural Center (3<sup>rd</sup> Floor)  
300 Mendham Road (Route 24)  
Morris Township, NJ 07960

### Mailing Address:

Morris County Municipal  
Utilities Authority  
PO Box 370  
Mendham, NJ 07945-0370

### Fedex/Airborne Address:

Morris County Municipal  
Utilities Authority  
300 Mendham Road  
Morris Township, NJ 07960



## Transfer Station Information

### Mt. Olive Transfer Station

168 Gold Mine Road, Flanders, NJ 07836

Telephone: (973) 347-8106

Fax: (973) 347-3784

### Hours of Operation:

7:30a.m. – 3:00p.m. Monday – Friday

7:30a.m. – 11:00a.m. Saturday

### Parsippany-Troy Hills Transfer Station

1100 New Edwards Road, Parsippany, NJ 07054

Telephone: (973) 808-9651

Fax: (973) 808-9649

### Hours of Operation:

7:00a.m. – 3:00p.m. Monday – Friday

7:30a.m. – 11:00a.m. Saturday



**In order to open an account with the MCMUA, you MUST have the following information prepared:**

- Completed customer application
- Check made out to the MCMUA for the minimum balance that applies to you plus anticipated tipping fees:

\$ 150.00 - Homeowners

**\*This amount is your minimum balance. You MUST put extra money in your account to cover anticipated tipping fees.**

## **Transfer Station Usage by Town**

### **Mt.Olive Transfer Station**

*Chester Boro	*Mendham Boro	*Mine Hill	*Rockaway Twp
*Chester Twp	*Mendham Twp	*Netcong	*Roxbury Twp
*Dover Town	*Mt. Arlington	*Randolph	*Victory Garden
*Jefferson Twp	*Mt. Olive	*Rockaway Boro	*Washington
	*Wharton Boro		

### **Parsippany-Troy Hills Transfer Station**

*Boonton Town	*Hanover Twp	*Morris Twp
*Boonton Twp	*Harding Twp	*Morristown
*Butler Boro	*Kinnelon Boro	*Mountain Lakes
*Chatham Boro	*Lincoln Park	*Parsippany
*Chatham TWP	*Long Hill	*Pequannock
*Denville	*Madison	*Riverdale
*East Hanover	*Montville	
*Florham Park	*Morris Plains	

### **Please fill in the correct waste origin (town) on the Origin and Destination (O&D)**

**Form.** The MCMUA is requesting that when you complete your O&D form that you take care in completing the section regarding the waste origin, which is the town where the garbage was generated. Many towns share similar names such as Boonton and Boonton Township; Chatham Borough and Chatham Township; Morristown, Morris Township and Morris Plains and; Rockaway Borough and Rockaway Township and the MCMUA requests that you accurately designate your load as being from the correct municipality. In addition, if your load is from multiple origins you should specify all the towns in the load by an estimated percentage as provided on the O&D form. Finally, please realize that many towns share zip codes so you cannot use the zip code of the generator to determine the waste origin. You must consider and know where the actual town boundaries are. As an example, many Rockaway Township, Wharton and Denville addresses use the 07801 Dover zip code.

# Transfer Station Price List

Effective 1/1/12

Type	Waste Description	Rate/Ton
10A	Municipal Solid Waste	\$ 95.92
10C	Non-Infectious/Non-Regulated Medical Waste	\$127.47
13A	Bulky Waste	\$ 95.92
13C	Construction & Demolition	\$ 95.92
23A	Vegetative Waste	\$ 95.92
25A	Food & Animal Processing	\$ 95.92
27A*	Dry Industrial (Non-Hazardous)	\$127.47

**\*Please Note:**

\*All 27A waste must first be approved by the Morris County MUA prior to delivery  
 Prices include the \$3.00/ton recycling tax instituted by the State as of 4-1-2008.



## 2012 Transfer Station, Curbside Recycling & Office Holiday Schedule

Holiday	Transfer Stations	MCMUA Offices	Curbside Recycling
<b>Sunday, January 1, 2012 – New Year’s Day</b> .....	<b>Closed</b>	<b>Closed</b>	<b>Closed</b>
<b>Monday, January 2, 2012 –New Year’s Day (Observed)</b> .....	<b>Closed</b>	<b>Closed</b>	<b>Closed</b>
Monday, January 16, 2012 – Martin Luther King Day .....	Open	Closed	Open
Monday, February 13, 2012 – Lincoln’s Birthday .....	Open	Closed	Open
Monday, February 20, 2012 – Presidents’ Day .....	Open	Closed	Open
Friday, April 6, 2012 – Good Friday.....	Open	Closed	Closed
<b>Monday, May 28, 2012 – Memorial Day</b> .....	<b>Closed</b>	<b>Closed</b>	<b>Closed</b>
<b>Wednesday, July, 4, 2012 – Independence Day</b> .....	<b>Closed</b>	<b>Closed</b>	<b>Closed</b>
<b>Monday, September 3, 2012 – Labor Day</b> .....	<b>Closed</b>	<b>Closed</b>	<b>Closed</b>
Monday, October 8, 2012 – Columbus Day .....	Open	Closed	Open
Tuesday, November 6, 2012 – Election Day .....	Open	Closed	Open
Monday, November 12, 2012 – Veterans Day .....	Open	Closed	Open
<b>Thursday, November 22, 2012 – Thanksgiving Day</b> .....	<b>Closed</b>	<b>Closed</b>	<b>Closed</b>
Friday, November 23, 2012 – Day After Thanksgiving.....	Open	Closed	Closed
Monday, December 24, 2012 – Christmas Eve.....	Open	Open	Open
<b>Tuesday, December 25, 2012 – Christmas Day</b> .....	<b>Closed</b>	<b>Closed</b>	<b>Closed</b>
Monday, December 31, 2012 – New Year’s Eve .....	Open	Open	Open
<b>Tuesday, January 1, 2013 – New Year’s Day</b> .....	<b>Closed</b>	<b>Closed</b>	<b>Closed</b>

**Bold font** indicates the transfer stations, curbside recycling program and offices will all be closed.

# Customer Application

Account Name: \_\_\_\_\_

Address: \_\_\_\_\_

City: \_\_\_\_\_ State: \_\_\_\_\_ Zip: \_\_\_\_\_

Phone: \_\_\_\_\_ Fax: \_\_\_\_\_

Contact Name: \_\_\_\_\_

Title: \_\_\_\_\_

Email Address: \_\_\_\_\_

## VEHICLE INFORMATION

DEP Number: \_\_\_\_\_ Vehicle Capacity: \_\_\_\_\_

Roll-Off Container ID Numbers: \_\_\_\_\_

Fill out top portion of this Customer Application and return it with a check that covers your required minimum balance **PLUS** anticipated tipping fees.

*Please mail checks (payable to the MCMUA) and completed application to:*

*Morris County MUA*

*PO Box 370, Mendham, NJ 07945-0370*

*If you have any questions, please call our office at (973)-829-8585 or (973) 829-8584*

-----**CUT HERE**-----

## MCMUA Transfer Stations - For Your Information

- Hard Hats and reflective vests are required when at the transfer station.
- If the account balance falls below the designated account minimum balance, you will be denied access to the transfer stations.
- If hauling garbage other than your own, you must be registered with the NJDEP and have an NJDEP sticker/decal on your vehicle.
- Homeowners and businesses without an account are allowed at the transfer station only three (3) times throughout the calendar year.
- Transfer stations cannot accept hazardous wastes such as pesticides, herbicides, oil-based paints, stains and varnishes, automotive fluids, batteries, tar, propane cylinders, etc. For your convenience, the MCMUA does operate a comprehensive household hazardous waste program. For more information call (973) 829-8006.
- All open top trailers and pick-ups are required to be tarped and not be removed until approaching the tipping area.
- Mandated recyclable materials must be source separated by the generator at their site and notices of violation may be issued against you if you tip mandated recyclable materials at the transfer stations. See the Mandated Recyclable Materials list for more information.

# Mandated Recyclable Materials

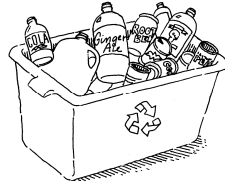
Morris County, New Jersey



The law requires all waste generators in Morris County to keep the materials that are listed below separate from garbage to be recycled (“source separation”). These materials must remain separated from garbage until they reach an appropriate recycling facility. Everyone is a waste generator and must keep the recyclable materials listed below separate from garbage whether at home, at work or at play. If a location does not have separate receptacles for these mandated recyclable materials, speak to the management and tell them recycling is the law. Waste generators include, but are not limited to, residents, (single-family homes, multifamily complexes, hotels), office buildings, businesses, schools, restaurants, shopping centers, medical facilities, government buildings, recreational areas, and construction sites.

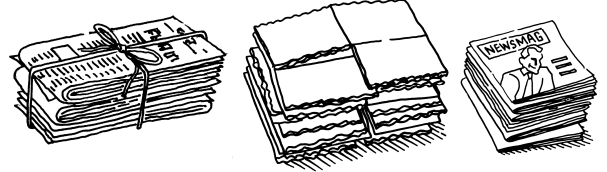
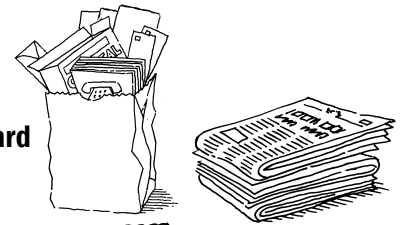
## Bottles and Cans

- Aluminum Cans
- Glass Bottles and Jars
- Plastic Bottles (coded 1 and 2)
- Steel (Tin) Cans



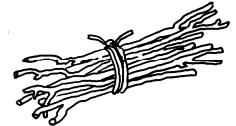
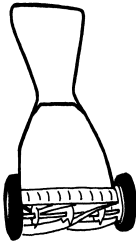
## Paper

- Newspaper
- Corrugated Cardboard
- Mixed Paper



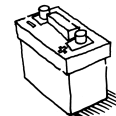
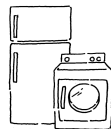
## Mandated Organics

- Leaves
- Grass Clippings
- Brush
- Natural Wood Waste - Logs, Stumps, Branches and Other Wood Tree Parts.



## Additional Mandated Recyclables

- Used Motor Oil\*
- Whole Tires\*\*
- Metal Appliances
- Hazardous Dry Cell Batteries\*
- Lead-Acid Batteries\*
- Oil-Contaminated Soil
- Television, Computers, Laptops, Monitors



\*For information on proper disposal of these items and other household hazardous waste, contact the MCMUA

\*\*Tires are allowed to be recycled and/or incinerated for energy recovery.

For further information on recycling or other waste disposal questions, visit [www.MCMUA.com](http://www.MCMUA.com) or call your town’s recycling coordinator or the MCMUA at (973) 285-8394.

## Definitions of Materials Mandated to be Source Separated and Recycled in Morris County, New Jersey

- **Aluminum Cans** - Cans made from aluminum that was manufactured to hold a serving of a beverage. Specifically omitted from this definition are aluminum foil and aluminum pie plates.
- **Glass Bottles and Jars** - Bottles and jars made from glass including clear, brown and green glass. A bottle is defined as a receptacle having a narrow neck and a mouth that can be corked or capped. A jar is defined as a wide-mouthed container that can be capped. Caps and lids not included. Specifically omitted from this definition are drinking glasses, windows, mirrors, light bulbs, and anything made of Pyrex® or ceramic.
- **Plastic Bottles (coded 1 and 2)** - Plastic bottles coded to indicate that they are comprised of the specific types of plastic compounds (polymers) known as polyethylene terephthalate (PETE) or high density polyethylene (HDPE). See symbols to the left. A bottle is defined as a receptacle having a narrow neck and a mouth that can be corked or capped. Caps and lids not included. Any item made of plastic that is not a bottle, and any plastic bottle without one of the symbols shown to the left is specifically omitted from this definition. Empty bottles which contained hazardous materials, such as motor oil, antifreeze, etc. should not be recycled.

The image shows two recycling symbols side-by-side. The first symbol is a triangle with the number '1' inside, labeled 'PETE' below it. The second symbol is a triangle with the number '2' inside, labeled 'HDPE' below it.
- **Steel (Tin) Cans** - An air-tight container for the distribution or storage of goods, composed of thin, usually ferrous, metal. Examples are soup cans and tuna fish cans.
- **Newspaper** - A publication containing news, information and advertising, usually printed on low-cost paper called newsprint. Newspaper may include glossy inserts which come with the paper, dependent upon the market conditions at the time.
- **Corrugated Cardboard** - Shipping containers made with kraft paper linerboard and corrugated medium.
- **Mixed Paper** - Various categories of recyclable paper including, but not limited to white and colored paper used in printers, photocopiers and fax machines, white and colored ledger paper, carbonless copy paper, construction paper, undeliverable mail, mailed promotional letters/advertisements/circulars, magazines, catalogues, envelopes, soft cover books.
- **Leaves** - Vegetative material, typically generated in the autumn when they fall from trees and then are raked from residents' and/or commercial lawns.
- **Grass Clippings** - Vegetative material generated when grass (lawns) is cut.
- **Brush** - Branches, woody plants and other similar vegetative material. Leaves and grass do not constitute brush.
- **Natural Wood Waste** - Logs, stumps, branches and other wood tree parts. Dimensional lumber is omitted from inclusion in this definition.
- **Oil-Contaminated Soil** - Non-hazardous soil that contains petroleum hydrocarbons (gasoline, diesel, kerosene, jet fuel, #4 & #6 heating oils and certain other refinery products including coal tar). This type of soil shall be determined to be non-hazardous in accordance with the standards set forth in N.J.A.C. 7:26.
- **Used Motor Oil** - Motor oil from motor vehicles, lawn mowers, boats, etc., which has served its intended useful purpose.
- **Lead-Acid Batteries** - Storage batteries in which the electrodes are grids of lead containing lead oxides that change in composition during charging and discharging, and the electrolyte is dilute sulfuric acid. These include starting batteries such as car batteries that deliver a short burst of high power to start the engine. In addition, they may include deep cell batteries found on boats or campers used to power accessories like trolling motors, winches or lights.
- **Hazardous Dry Cell Batteries** - Rechargeable batteries, such as nickel-cadmium, nickel-iron, nickel metal hydride, lithium ion, small sealed lead acid, etc. These are often used as substitutes for non-rechargeable batteries in standard sizes such as AAA, AA, C, D and 9V. Rechargeable batteries are commonly found in cordless tools, cellular and cordless phones, laptop computers, cameras, remote controls, toys, etc. Also included in this definition are non-rechargeable batteries that are hazardous as defined by the Resource Conservation Recovery Act ("RCRA"), regardless of the RCRA exclusion of household waste from the definition of hazardous waste pursuant to 40 C.F.R. 261.4(b). Non-rechargeable, hazardous batteries include older alkaline and carbon zinc batteries as well as silver oxide, mercury and magnesium button-type batteries, etc. It should be noted that domestically manufactured alkaline and carbon zinc non-rechargeable batteries made after circa 1994 eliminated mercury content to the point that they should not be considered RCRA hazardous and therefore are not included in this material category.
- **Metal Appliances** - Appliances composed predominantly of metal, and may include stoves, washing machines and dryers, for example, if the appliance is predominantly metal. Also included are air conditioners, refrigerators and dehumidifiers if they are predominantly metal. If these appliances on the latter list contain refrigerants that are prohibited by the Clean Air Act from being knowingly vented, the refrigerant must be recovered accordingly.
- **Whole Tires\*** - Tires that are whole, not chipped into small pieces. \*Tires are allowed to be recycled and/or incinerated for energy recovery.
- **Televisions, Computers, Laptops and Monitors** - As of 2011, these listed electronic items are banned from the garbage in accordance with New Jersey's Electronic Waste Management Act and must be recycled at designated programs.