



December 1, 2017

Transfer Station News & Notes

Tipping Fees to Increase as of January 1, 2018 - Please be advised that starting on January 1, 2018, the tipping fees charged for the disposal of solid waste types at the MCMUA transfer stations will be increased by 1% or \$0.95/ton. The 2017 tipping fee of \$95.45/ton for the disposal of all waste types will be increased to \$96.40/ton. See the tipping fee chart below for details.

| Waste Type | | Current (2017) Tipping Fee | New Tipping Fee (Effective Jan. 1, 2018) |
|------------|------------------------------------|----------------------------|--|
| Type 10 | Municipal Solid Waste | \$ 95.45 | \$ 96.40 |
| Type 13 | Bulky Waste | \$ 95.45 | \$ 96.40 |
| Type 13C | Construction and Demolition Waste | \$ 95.45 | \$ 96.40 |
| Type 23 | Vegetative Waste | \$ 95.45 | \$ 96.40 |
| Type 25 | Animal Processing Waste | \$ 95.45 | \$ 96.40 |
| Type 27 | Non-Hazardous Dry Industrial Waste | \$ 95.45 | \$ 96.40 |

2018 Holiday Schedule - Below is holiday list when the MCMUA transfer stations and/or MCMUA administrative offices will be open or closed for the remainder of 2017 and the upcoming year.

| Holiday | Transfer Stations | MCMUA Offices |
|--|-------------------|---------------|
| 2017 (remaining) | | |
| Monday, December 25, 2017 – Christmas Day..... | Closed | Closed |
| 2018 | | |
| Monday, January 1, 2018 – New Year’s Day | Closed | Closed |
| Monday, January 15, 2018 – Martin Luther King Jr. Day..... | Open | Closed |
| Monday, February 12, 2018 – Lincoln’s Birthday..... | Open | Closed |
| Monday, February 19, 2018 – Presidents’ Day | Open | Closed |
| Friday, March 30, 2018 – Good Friday..... | Open | Closed |
| Monday, May 28, 2018 – Memorial Day..... | Closed | Closed |
| Wednesday, July, 4, 2018 – Independence Day | Closed | Closed |
| Monday, September 3, 2018 – Labor Day..... | Closed | Closed |
| Monday, October 8, 2018 – Columbus Day | Open | Closed |
| Tuesday, November 6, 2018 – Election Day | Open | Closed |
| Monday, November 12, 2018 – Veteran’s Day (Observed) | Open | Closed |
| Thursday, November 22, 2018 – Thanksgiving Day | Closed | Closed |
| Friday, November 23, 2018 – Day After Thanksgiving..... | Open | Closed |
| Tuesday, December 25, 2018 – Christmas Day | Closed | Closed |
| Tuesday, January 1, 2019 – New Year’s Day | Closed | Closed |

Bold font indicates the transfer stations and offices will all be closed.

Mandated Recyclable Materials

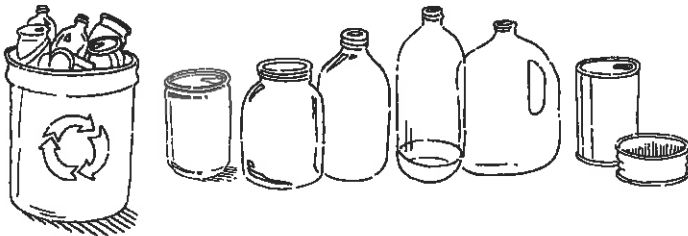
Morris County, New Jersey



The law requires all waste generators in Morris County to keep the materials that are listed below separate from garbage to be recycled ("source separation"). These materials must remain separated from garbage until they reach an appropriate recycling facility. Everyone is a waste generator and must keep the recyclable materials listed below separate from garbage whether at home, at work or at play. If a location does not have separate receptacles for these mandated recyclable materials, speak to the management and tell them recycling is the law. Waste generators include, but are not limited to, residents, (single-family homes, multifamily complexes, hotels), office buildings, businesses, schools, restaurants, shopping centers, medical facilities, government buildings, recreational areas, and construction sites.

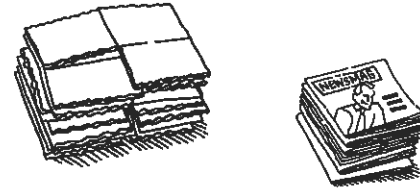
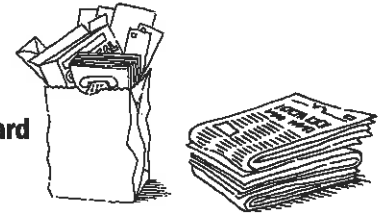
Bottles and Cans

- Aluminum Cans
- Glass Bottles and Jars
- Plastic Bottles (coded 1 and 2)
- Steel (Tin) Cans



Paper

- Newspaper
- Corrugated Cardboard
- Mixed Paper



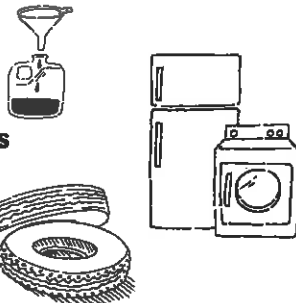
Mandated Organics

- Leaves
- Grass Clippings
- Brush
- Natural Wood Waste - Logs, Stumps, Branches and Other Wood Tree Parts.

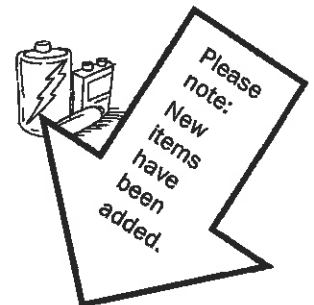


Additional Mandated Recyclables

- Used Motor Oil*
- Metal Appliances
- Whole Tires**



- Hazardous Dry Cell Batteries*
- Lead-Acid Batteries*
- Oil-Contaminated Soil
- Televisions, Computers, Tablets, Laptops, Monitors, Desktop Printers, Desktop Faxes



*For information on proper disposal of these items and other household hazardous waste, contact the Morris County Municipal Utilities Authority (MCMUA). See contact information below.

**Tires are allowed to be recycled and/or incinerated for energy recovery.

For further information on recycling or other waste disposal questions, visit www.MCMUA.com or call your town's recycling coordinator or the MCMUA at (973) 285-8394.